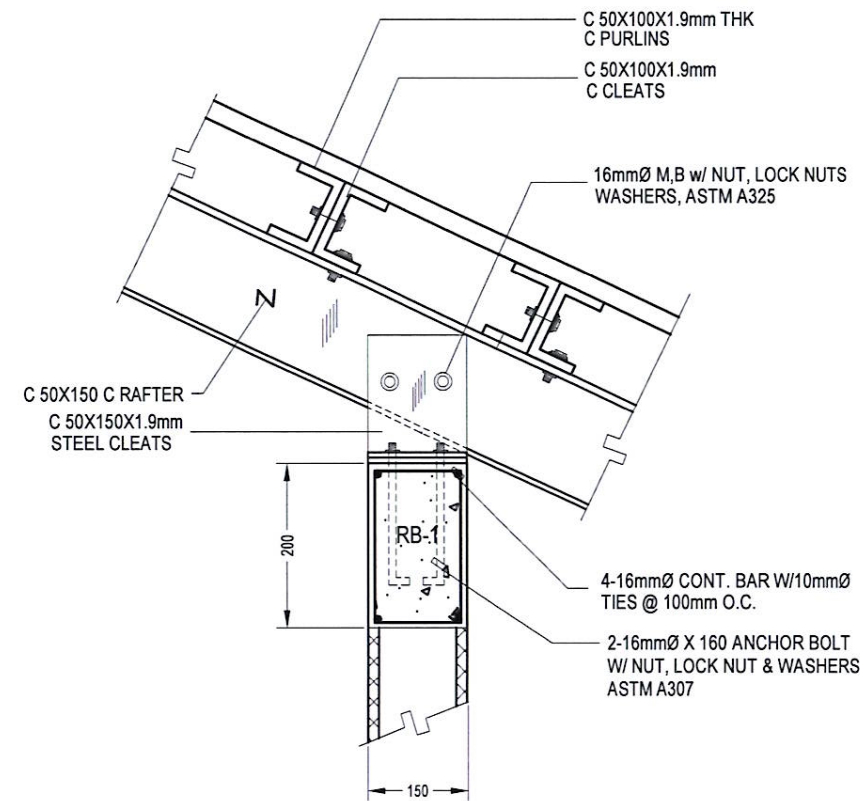
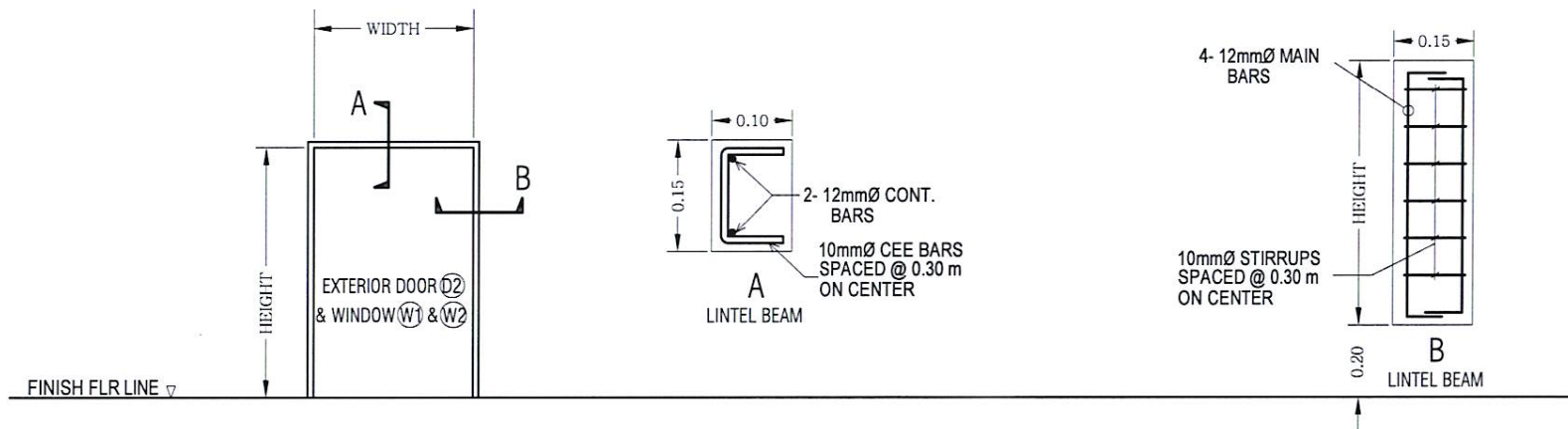


1 RAFTER CONNECTION DET. A
S1 S2 SCALE 1 : 10 M



2 RAFTER CONNECTION DET. B
S1 S2 SCALE 1 : 10 M



3 EXTERIOR OPENING REINF.
(LINTEL BEAM & COLUMN CONSTRUCTION)
S2 S2 SCALE: 1 : 10 M

SATISFACTORY TO:
[Signature]
BEATRIX S. ANAGARAN
MNGR, BUSINESS AND INVESTMENT GRP.



ENGINEERING DEPARTMENT
PUBLIC WORKS & TECHNICAL SERVICES GROUP
BLDG. 285 BARRYMAN ROAD, SUBIC BAY FREEPORT ZONE

CADD BY:
[Signature]
ASL
DESIGNED:
[Signature]
RUS

CHECKED BY:
[Signature]
EDISON D. ICO
DIV. CHIEF III PDD

REVIEWED BY:
[Signature]
GARY P. FERNANDEZ
MANAGER, ENG'G DEPARTMENT

RECOMMENDED:
[Signature]
MARCO A. ESTABILLO
DA FOR PWTS

APPROVED:
[Signature]
ATTY. WILMA T. EISMA
CHAIRMAN & ADMINISTRATOR



PROJECT TITLE:
RENOVATION OF GBID OFFICE
AT BLDG. 662
LOC. BLDG 662 TAFT ST. SBFZ

SHEET NO.
S-2
10 of 17