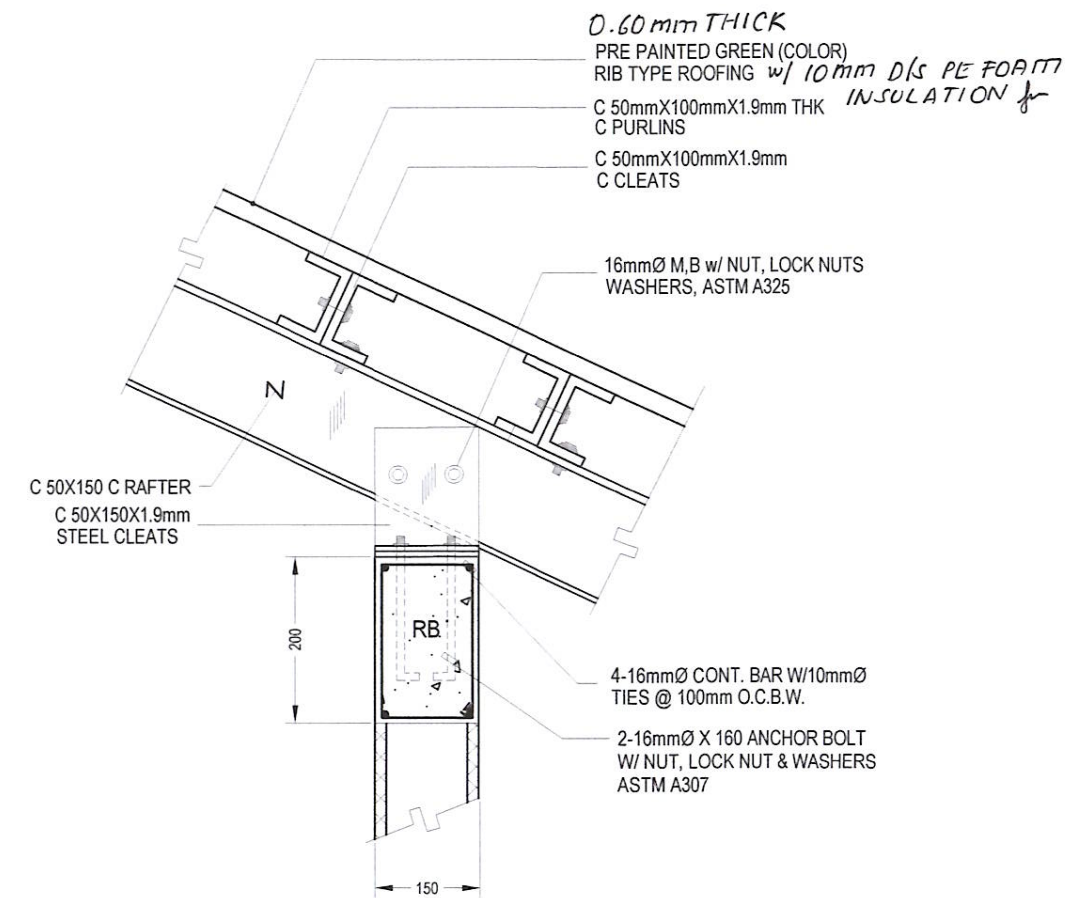
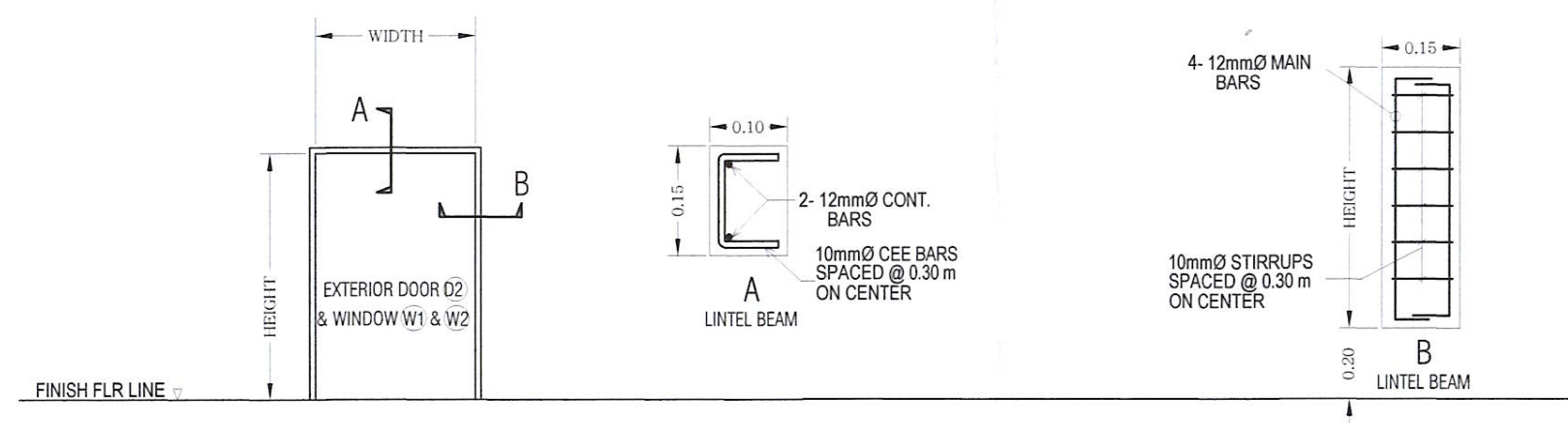


1 RAFTER CONNECTION DET. A
S1 S2 SCALE 1 : 10 M



2 RAFTER CONNECTION DET. B
S1 S2 SCALE 1 : 10 M



3 EXTERIOR OPENING REINF. (LINTEL BEAM & COLUMN CONSTRUCTION)
S1 S2 SCALE: 1 : 10 M

SATISFACTORY TO:

CLEOFE C. ESPINELI
D.C. BID-ICT

 ENGINEERING DEPARTMENT PUBLIC WORKS & TECHNICAL SERVICES GROUP BLDG. 255 BARRYMAN ROAD, SUBIC BAY FREEPORT ZONE	CADD BY: ASL	CHECKED BY:	REVIEWED BY:	RECOMMENDED: MARCO A. ESTABILLO DA FOR PWTS&G	APPROVED: ATTY. WILMA T. EISMA CHAIRMAN & ADMINISTRATOR	 SUBIC BAY METROPOLITAN AUTHORITY SUBIC BAY FREEPORT ZONE	PROJECT TITLE: OFFICE RENOVATION AND REHABILITATION OF BID-ICT	SHEET NO. S-2
	DESIGNED: RGS	 EDISON D. ICO DIV. CHIEF III PDD	 GARY P. FERNANDEZ MANAGER, ENG'G DEPARTMENT	 ATTY. WILMA T. EISMA CHAIRMAN & ADMINISTRATOR	 CLEOFE C. ESPINELI D.C. BID-ICT		LOC. BLDG 662 TAFT ST. SBFZ	10 of 14