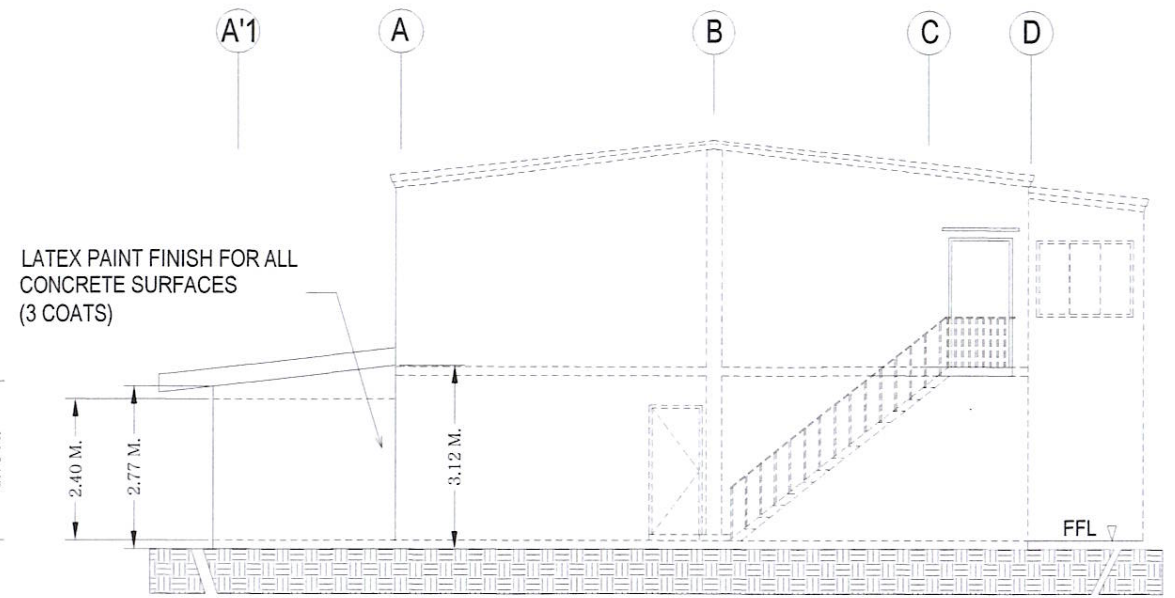
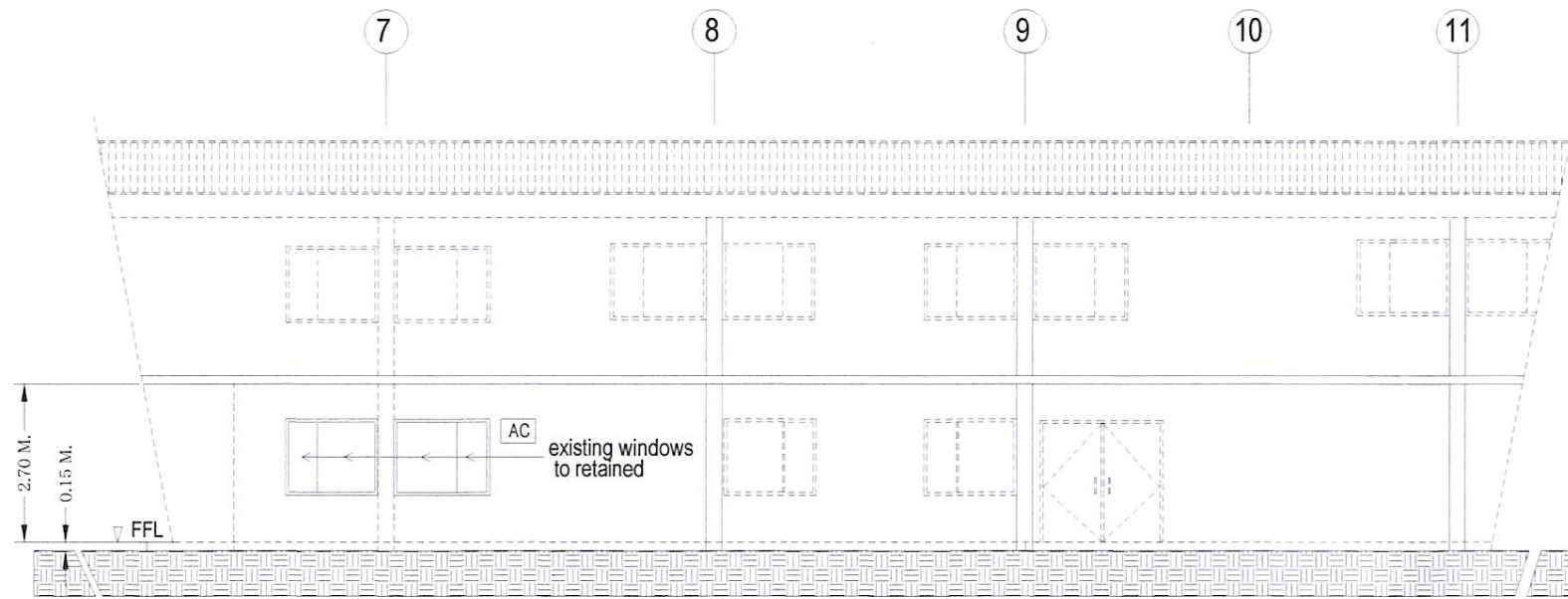


2 REAR ELEVATION
A3 | A6 SCALE : 1:100 M

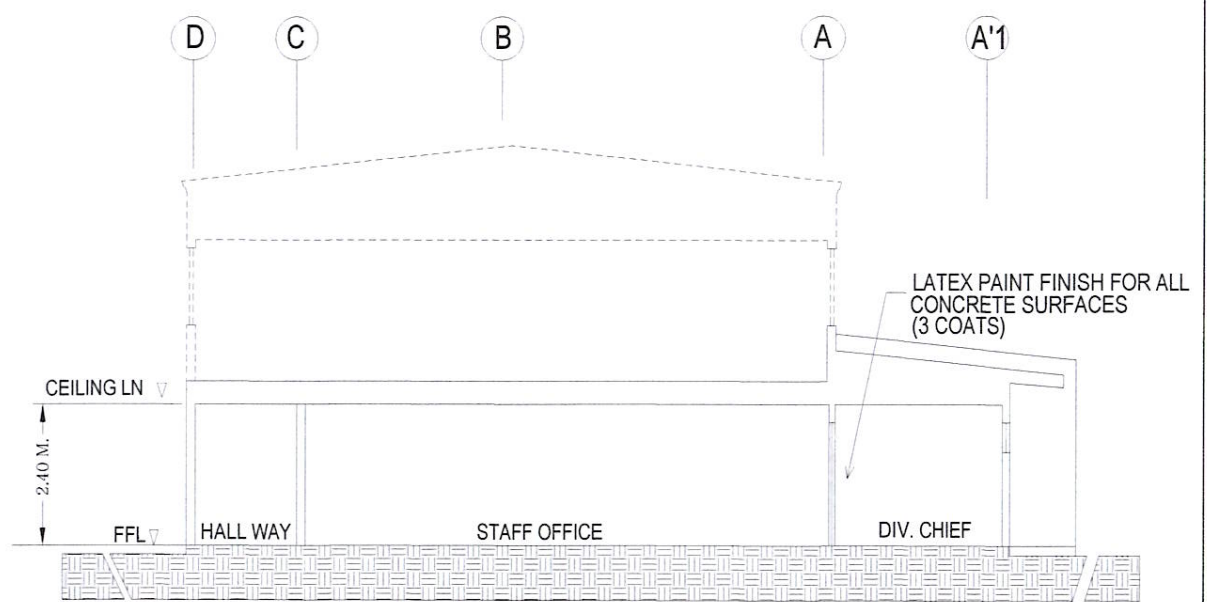
NOTE :
LATEX PAINT FINISH FOR ALL
CONCRETE SURFACES DAMAGE
BY NEW OPENING OF DOOR & WINDOWS
INCLUDING NEW WALL (3 COATS)



3 LEFT SIDE ELEVATION
A3 | A6 SCALE : 1:100 M



1 FRONT ELEVATION
A3 | A6 SCALE : 1:100 M



4 LONGITUDINAL SECTION
A3 | A6 SCALE : 1:100 M

SATISFACTORY TO:

CLEORE C. ESPINELI
DIV. CHIEF

 ENGINEERING DEPARTMENT PUBLIC WORKS & TECHNICAL SERVICES GROUP BLDG. 255 BARRYMAN ROAD, SUBIC BAY FREPORT ZONE	CADD BY: ASL	CHECKED BY: EDISON D. ICO DIV. CHIEF III PDD	REVIEWED BY: GARY P. FERNANDEZ MANAGER, ENG'G DEPARTMENT	RECOMMENDED: MARCO A. ESTABILLO DA FOR PWTS&G	APPROVED: ATTY. WILMA T. EISMA CHAIRMAN & ADMINISTRATOR	PROJECT TITLE: SUBIC BAY METROPOLITAN AUTHORITY SUBIC BAY FREPORT ZONE	SHEET NO. A-5
	DESIGNED: ASL					OFFICE RENOVATION AND REHABILITATION OF BID-ICT	6 of 14

LOC. BLDG 682 TAFT ST. SBZ